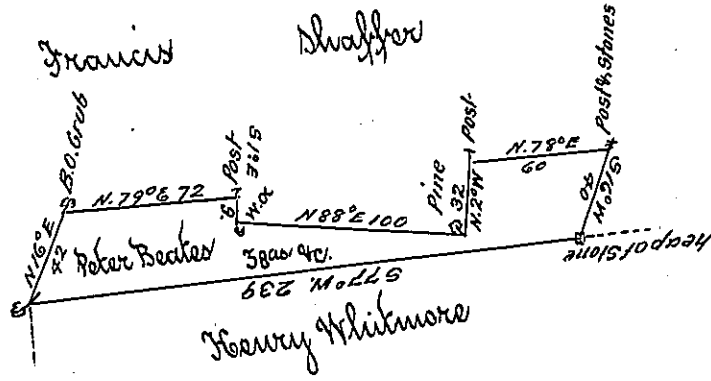


251 60



A Draught of a tract of land called _____ situate joining land of Henry Whitmer & Francis Shaffer in Northway Township Northumberland County containing thirty eight acres & allowance of six & cent for roads &c surveyed for Peter Deates the 14th Day of August 1786 in Pursuance of a Warrant Dated the 20th Day of September 1785

By John Lukens Esq: }
Surv: Genl }

by Wm Gray D.S

IN TESTIMONY that the above is a copy of the original remaining on file in the Department of Internal Affairs of Pennsylvania, made conformably to an Act of Assembly approved the 16th day of February, 1833, I have hereunto set my Hand and caused the Seal of said Department to be affixed at Harrisburg, this thirtieth day of March 1904.

George P. Brown
Secretary of Internal Affairs.